

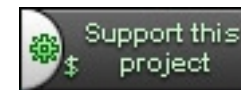
Iometer

Introduction

As the Iometer User's Guide says, Iometer is an I/O subsystem measurement and characterization tool for single and clustered systems. It was originally developed by the Intel Corporation and announced at the Intel Developers Forum (IDF) on February 17, 1998 - since then it got wide spread within the industry.

Meanwhile Intel has discontinued to work on Iometer and it was given to the Open Source Development Lab (OSDL). In November 2001, a project was registered at SourceForge.net and an initial drop was provided. Since the relaunch in February 2003, the project is driven by an international group of individuals who are continuously improving, porting and extend the product.

The tool (Iometer and Dynamo executable) is distributed under the terms of the [Intel Open Source License](#). The `iomtr_kstat` kernel module as well as other future independent components are distributed under the terms of the [GNU Public License](#).



Project

[\[Team\]](#)

[\[Get involved\]](#)

[\[Donations\]](#)

Software

[\[Platforms\]](#)

[\[Downloads\]](#)

[\[Known Issues\]](#)

[\[Screenshots\]](#)

Resources

[\[Documents\]](#)

[\[Mailing Lists\]](#)

[\[Links\]](#)



Supported Platforms Matrix

The operating system and processor combinations - for which Iometer is known to compile and work - are named in the following list. Please notice, that this list covers the Dynamo part only. The GUI itself is available for Windows on IA32 / IA64 only!

2003.12.16

	IA32	IA64	SPARC
Linux	Debian 3.0 (2.4.18 kernel, gcc 2.95.4, glibc 2.2.5), Red Hat 9 (2.4.20 kernel, gcc 3.2, glibc 2.3.2 with NPTL)*, Red Hat 8.0 (2.4.18 kernel, gcc 3.2, glibc 2.2.93), Red Hat 7.2 (2.4.7 kernel, gcc 2.96, glibc 2.2.5), SuSE 8.1 (2.4.19 kernel, gcc 3.2, glibc 2.2.5), SuSE 7.3 (2.4.10 kernel, gcc 2.95.3, glibc 2.2.4)	<i>not supported</i>	<i>not supported</i>
Solaris	<i>unknown</i>	<i>not supported</i>	Solaris 8 (gcc 2.95.3)
Windows	Windows XP Pro (MSVC++ .NET), Windows 2000 (MSVC++ 6.0), Windows NT 4 (MSVC++ 6.0)	Windows XP (WIN2003 DDK), Windows 2003 (WIN2003 DDK)	<i>not supported</i>

List of known combinations for version 2003.12.16 ("*should work*" means, that this combination is expected to work, but wasn't confirmed till now).

* = To get the job done, please consult the Know Issues page [\[here\]](#) first!

2003.05.10

	IA32	IA64	SPARC
Linux	Debian 3.0 (2.4.18 kernel, gcc 2.95.4, glibc 2.2.5), Red Hat 9 (2.4.20 kernel, gcc 3.2, glibc 2.3.2 with NPTL)*, Red Hat 8.0 (2.4.18 kernel, gcc 3.2, glibc 2.2.93), Red Hat 7.2 (2.4.7 kernel, gcc 2.96, glibc 2.2.5), SuSE 8.1 (2.4.19 kernel, gcc 3.2, glibc 2.2.5), SuSE 7.3 (2.4.10 kernel, gcc 2.95.3, glibc 2.2.4)	<i>not supported</i>	<i>not supported</i>
Solaris	<i>unknown</i>	<i>not supported</i>	Solaris 8 (gcc 2.95.3)
Windows	Windows XP Pro (MSVC++ .NET), Windows 2000 (MSVC++ 6.0), Windows NT 4 (MSVC++ 6.0)	<i>should work</i>	<i>not supported</i>

List of known combinations for version 2003.05.10 ("*should work*" means, that this combination is expected to work, but wasn't confirmed till now).

* = To get the job done, please consult the Know Issues page [\[here\]](#) first!

2003.02.15

	IA32	IA64	SPARC
Linux	Red Hat 8.0 (2.4.18 kernel, gcc 3.2), Red Hat 7.2 (2.4.7 kernel, gcc 2.96), SuSE 8.1 (2.4.19 kernel, gcc 3.2), SuSE 7.3 (2.4.10 kernel, gcc 2.95.3)	<i>not supported</i>	<i>not supported</i>
Solaris	<i>unknown</i>	<i>not supported</i>	<i>should work</i>
Windows	Windows 2000 (MSVC++ 6.0), Windows NT 4 (MSVC++ 6.0)	<i>should work</i>	<i>not supported</i>

List of known combinations for version 2003.02.15 ("*should work*" means, that this combination is expected to work, but wasn't confirmed till now).

2003.02.08

	IA32	IA64	SPARC
Linux	Red Hat 7.2 (2.4.7 kernel, gcc 2.96), SuSE 7.3 (2.4.10 kernel, gcc 2.95.3)	<i>not supported</i>	<i>not supported</i>
Solaris	<i>unknown</i>	<i>not supported</i>	Solaris 8 (gcc 2.95.3)
Windows	Windows 2000 (MSVC++ 6.0)	<i>should work</i>	<i>not supported</i>

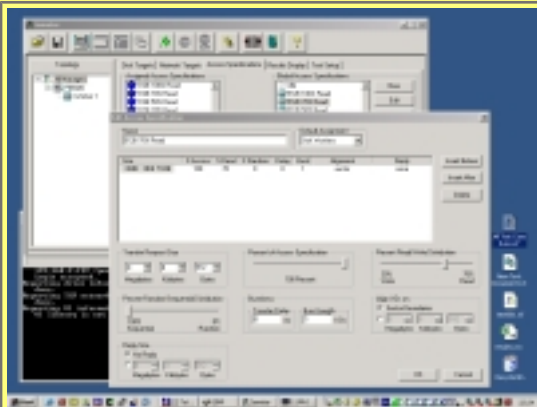
List of known combinations for version 2003.02.08 ("*should work*" means, that this combination is expected to work, but wasn't confirmed till now).

Iometer

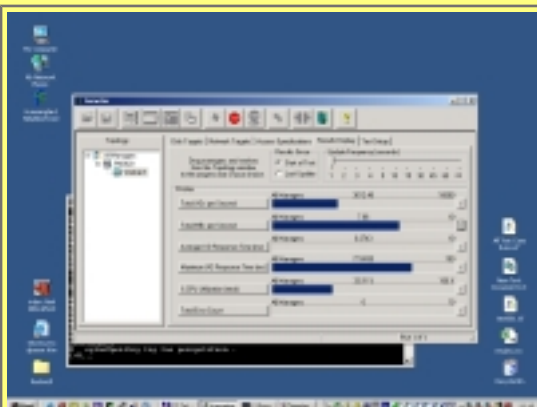
Screenshots

The following are some screenshots of the native Windows GUI:

screenshots



Screenshot showing the configuration of the Access Specifications, so the definition of the work load.

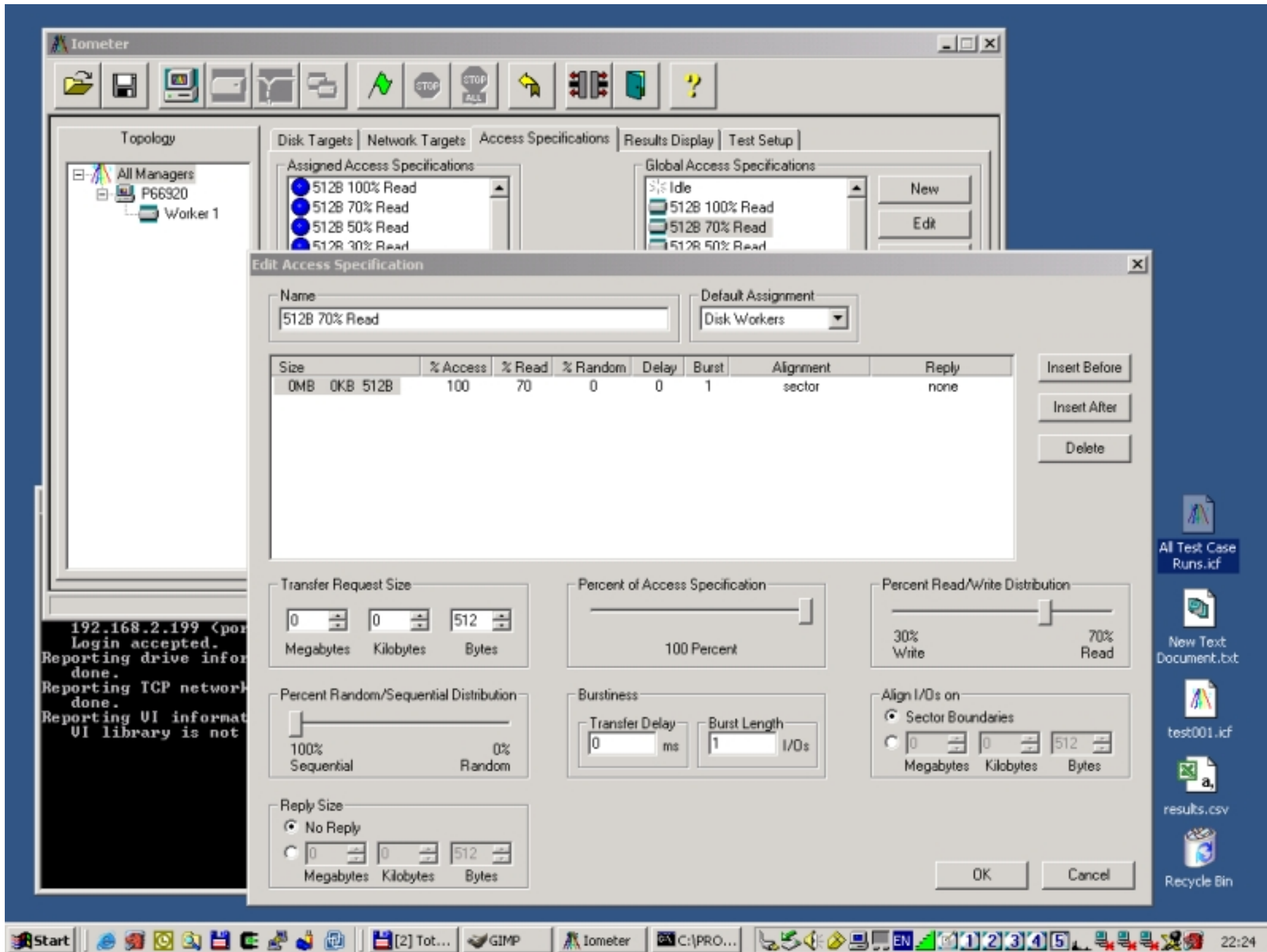


Screenshot of a running stress test session with the results tap in front.

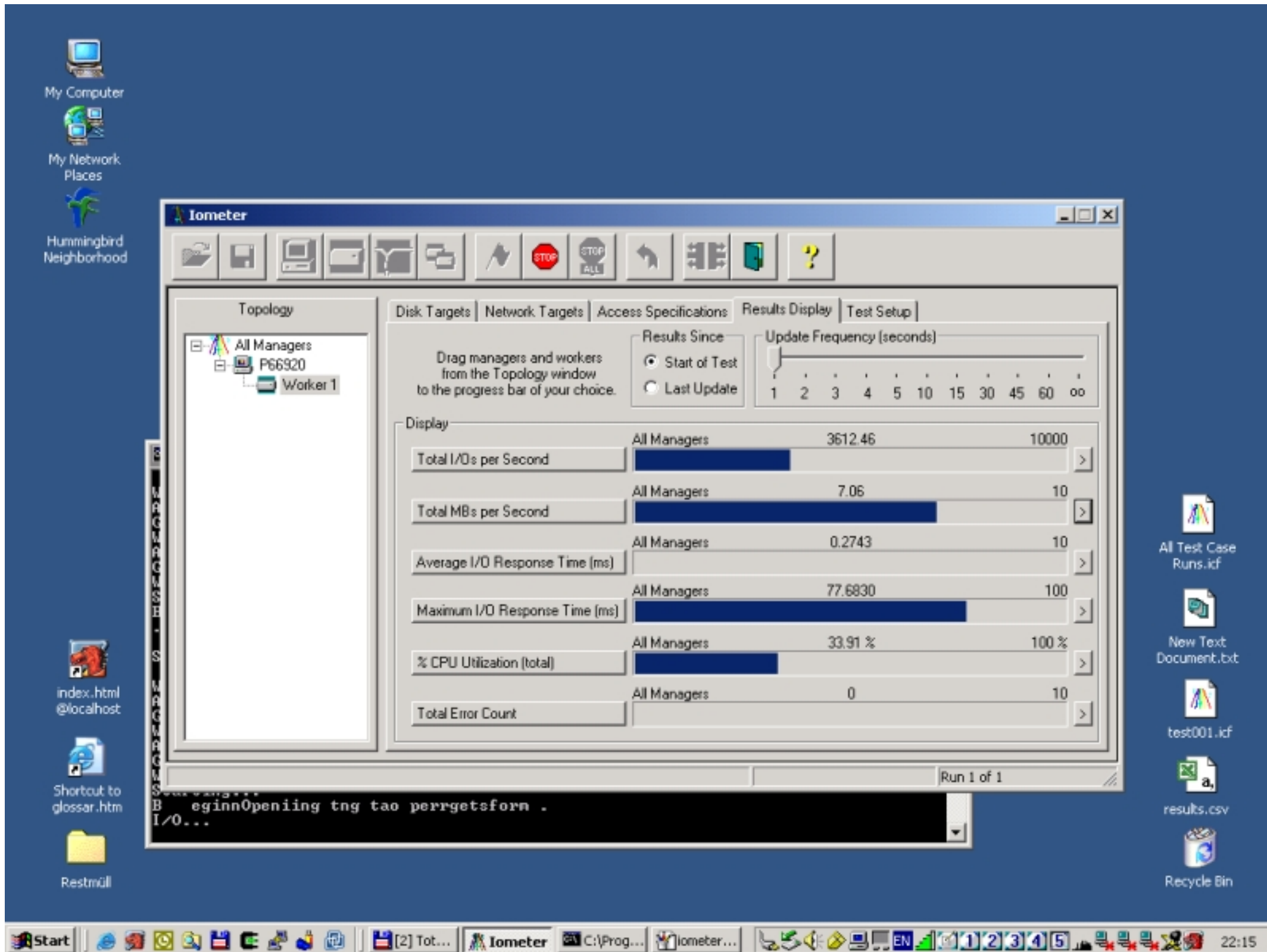


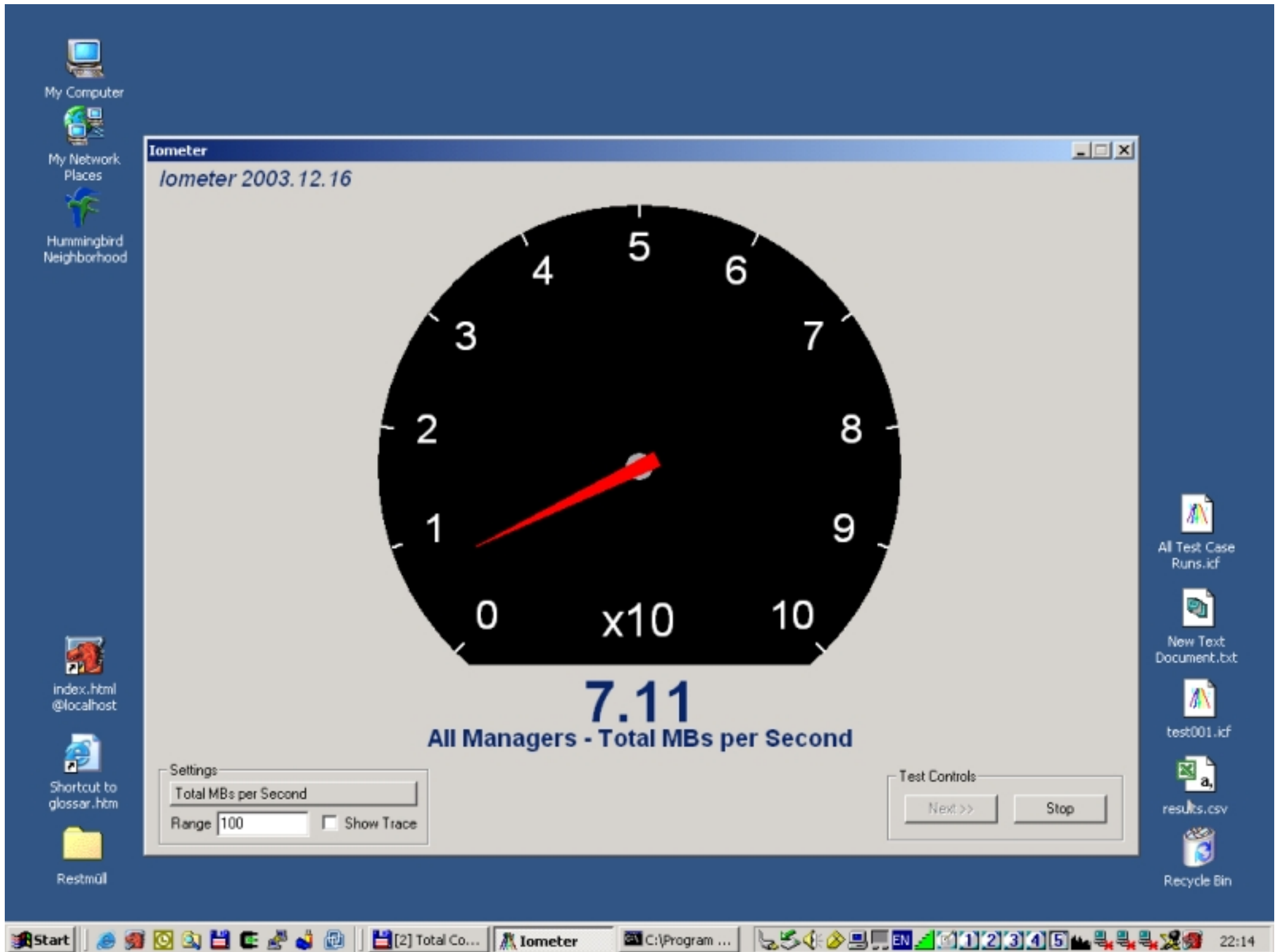
Screenshot of a running stress test session with the tachometer in front.

List of some screenshots of the native Windows GUI.



```
192.168.2.199 <por
Login accepted.
Reporting drive info
done.
Reporting TCP network
done.
Reporting UI informat
UI library is not
```





Iometer

Downloads

The sources as well as prebuild binaries released by the Iometer project are hosted at Sourceforge - in the file area of the Iometer project. For stable releases you will find links to that area including MD5 checksums to verify what you have downloaded. Unstable releases, so development snapshots and release candidates are not covered here - please move on to the file area at Sourceforge.

2003.12.16

	OS	CPU	image	MD5 checksum
[download]	Linux	IA32	Prebuild binaries	1484cb87367c14ffc20d88abf07a01ce
[download]	Solaris	SPARC	Prebuild binaries	70ca8c833cf3e83028d8f1db59c0e000
[download]	Windows	IA32	Installer and prebuild binaries	3c9124fd64a8b6ac123b71875c274aa0
[download]	Windows	IA64	Prebuild binaries	0ac71be37e1134a151f921708b61d0ce
[download]	<i>common</i>	<i>common</i>	Sources	873a18a38928e428365e87a92aa1bd88
[download]	<i>common</i>	<i>common</i>	Documentation	8637442c836eb49a850ce06fb27c8424

List of images for version 2003.12.16.

2003.05.10

	OS	CPU	image	MD5 checksum
[download]	Linux	IA32	Prebuild binaries	<i>none</i>
[download]	Solaris	SPARC	Prebuild binaries	<i>none</i>
[download]	Windows	IA32	Prebuild binaries	<i>none</i>
[download]	Windows	IA64	Prebuild binaries	<i>none</i>
[download]	<i>common</i>	<i>common</i>	Sources	<i>none</i>
[download]	<i>common</i>	<i>common</i>	Documentation	<i>none</i>

List of images for version 2003.05.10.

2003.02.15

	OS	CPU	image	MD5 checksum
[download]	Linux	IA32	Prebuild binaries	<i>none</i>
[download]	Windows	IA32	Prebuild binaries	<i>none</i>
[download]	<i>common</i>	<i>common</i>	Sources	<i>none</i>
[download]	<i>common</i>	<i>common</i>	Documentation	<i>none</i>

List of images for version 2003.02.15.

2003.02.08

	OS	CPU	image	MD5 checksum
[download]	Linux	IA32	Prebuild binaries	<i>none</i>
[download]	Windows	IA32	Prebuild binaries	<i>none</i>
[download]	<i>common</i>	<i>common</i>	Sources	<i>none</i>
[download]	<i>common</i>	<i>common</i>	Documentation	<i>none</i>

List of images for version 2003.02.08.